



AAM Competition Q50/Q60 3.0t 3" True Dual Premium Adjustable Exhaust System V2



INSTALLATION INSTRUCTIONS

(DESIGNED FOR ONLINE USE AND COLOR PRINTING)

*****WARNING: PRODUCT(S) ARE DESIGNED FOR OFF-ROAD / COMPETITION USE ONLY*****

Read all directions before attempting installation. This product requires above average mechanical ability to install properly, professional installation recommended. Installation requires appropriate tools for proper installation of this kit. As with all mechanical projects, take appropriate precautions for your personal safety and for the proper care and treatment of the vehicle being serviced. AAM Competition, LLC offers no warranty and accepts no liability caused by improper installation, modification and/or use of this product. Installation may void factory's manufacturer's warranty. Contact AAM Competition LLC or an authorized Dealer with questions or problems regarding this product. When removing Stock/OEM parts read and follow the factory service manual for proper procedures. *Copyright AAM Competition, LLC 2018*



****Photos are of prototype exhaust system – production systems look slightly different****

Tools Needed:

- 3/8" Drive Ratchet
- Ratchet Extension's
- Electrical Crimp Tool
- Screwdriver
- 13mm Socket
- 14mm Socket and Wrench
- Trim Clip Removal Tool
- Wrenches
- Blade/Knife

Included Parts:

Description	Quantity
Exhaust Muffler Section	1
Exhaust Mid-pipe Section	1
Exhaust H-pipe Section	1
3/8" Flat Washer	8
3/8"-16 x 1.5" Socket Head Cap Screw	4
3/8" x 16 Hex Serrated Nut	4
Exhaust Tip Clamps	2
Exhaust Tips	2
3.0" SS 2-bolt Gasket	2
Hanger Spacer 1	2
Vacuum Box Generator with power cable	1
Vacuum Hose	1
Vacuum Tee	1
Zip Ties	10

WARNING: USE OF POWER TOOLS DURING INSTALLATION MAY CAUSE DAMAGE. WE RECOMMEND THE USE OF HAND TOOLS ONLY DURING INSTALLATION.

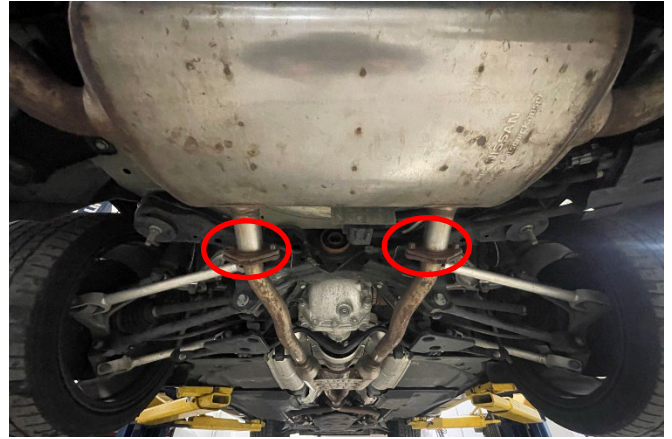
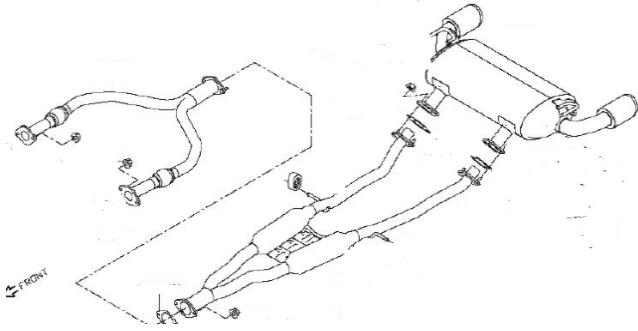
Note: "Left Side" and "Right Side" of vehicle is from the perspective of sitting in the driver seat of the vehicle and looking forward

ATTN: If exhaust leaks are present, coat the ball ends of the AAM Competition exhaust with RTV silicone gasket maker

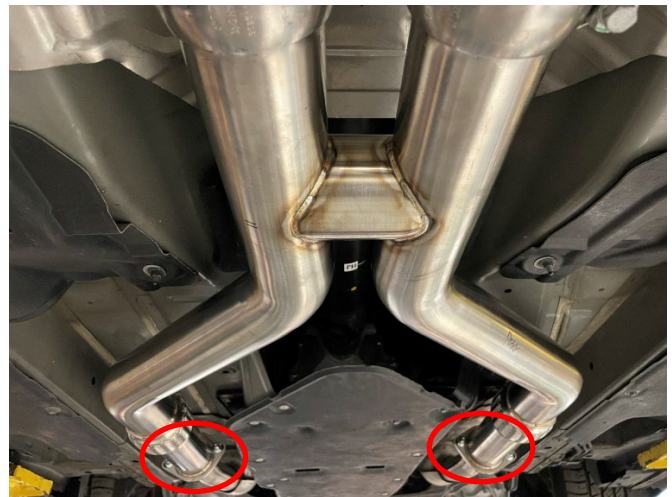
Installation

Steps 1-5 Removal of factory exhaust and installation of new exhaust

1. Use the 14mm socket to remove the factory exhaust system (y-pipe, mid-pipe, and rear muffler section)



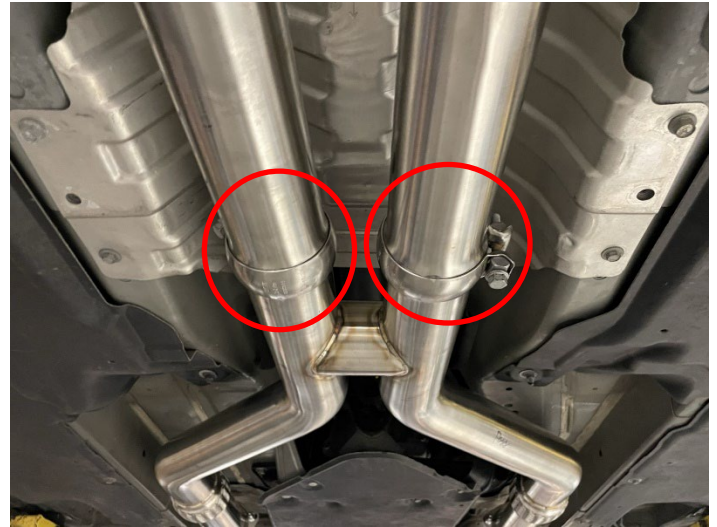
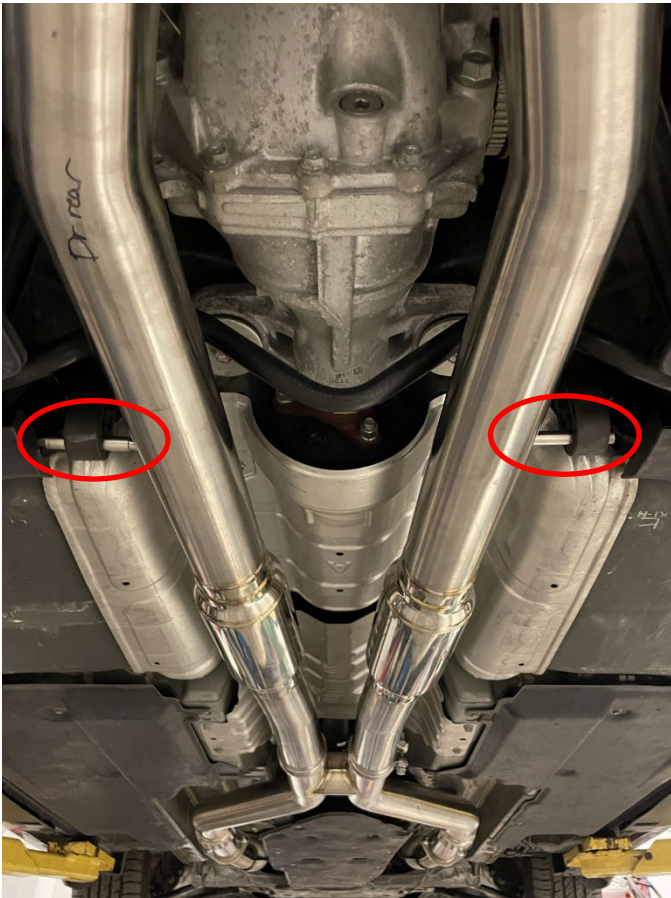
2. Install the AAMC Competition H-Pipe Section as shown below, use an under-hoist support stand to hold the end of the H-pipe section. Use the supplied bolts, nuts, and washers (two bolts and nuts per side, four washers per side) to attach the front of the H-pipe section to the factory lower downpipes. When using the stock factory lower downpipes, use the included flange adapter between the factory lower downpipe flanges and the AAM Competition H-pipe flanges and put gaskets on both sides of the flange adapter. When using aftermarket lower downpipes with larger flanges or the AAM Competition 3" Full Cast Downpipes do not use the flange adapter and only use one gasket per side. Throw two Swivel Exhaust Clamps on the h-pipe section before installing the mid-pipe section. If exhaust leaks are present, coat the ball end of the AAM Competition exhaust with RTV silicone gasket maker.



Optional:



3. Install the AAM Competition mid-pipe section as shown below. Slip the two rear hanger rods into the factory rubber hangers on both sides. Install one per side to facilitate installation. Tighten the swivel exhaust clamps just enough to hold the mid-pipe in place but still allowing rotational movement when you apply rotational force by hand.

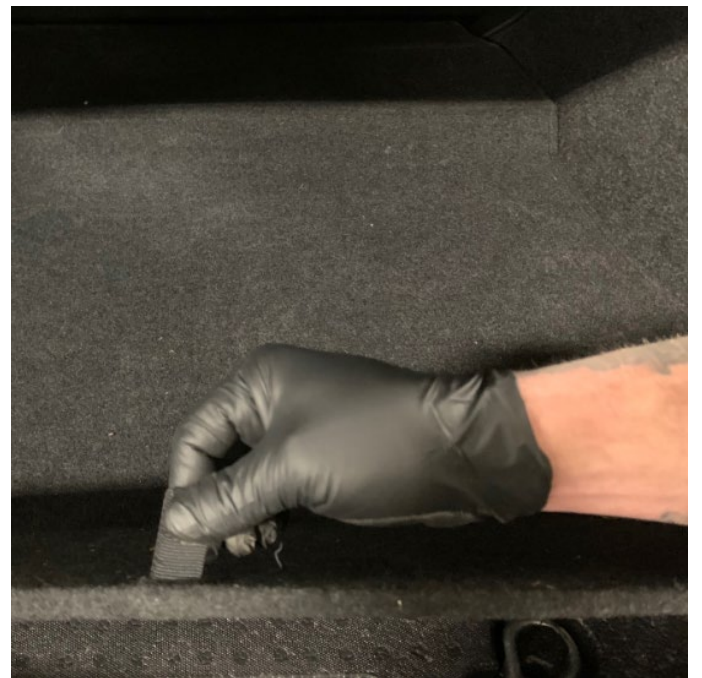
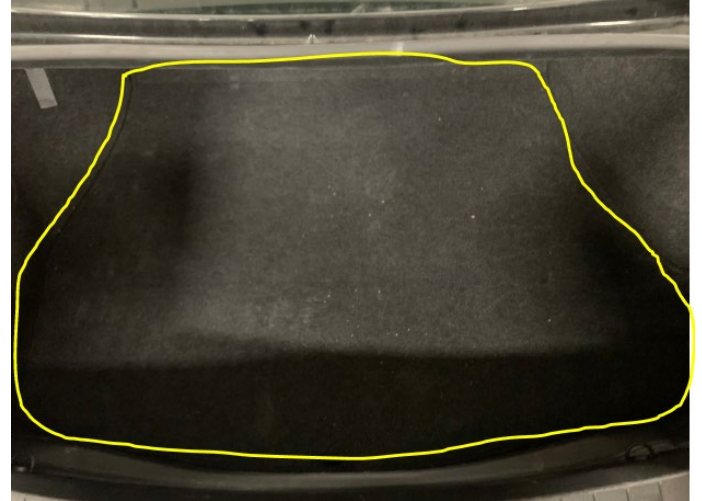
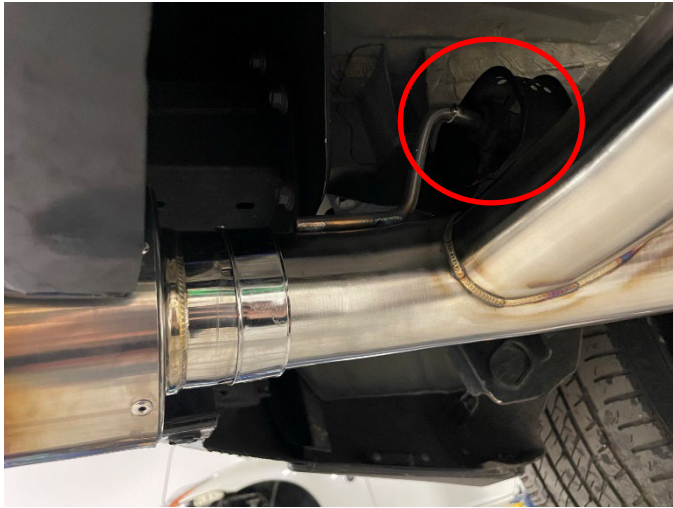


4. Install the AAM Competition rear muffler section. Slide the hanger rod into the factory rubber hanger mount as shown below. Tighten the swivel exhaust clamps just enough to hold the exhaust in place but still allowing rotational movement when you apply rotational force by hand.

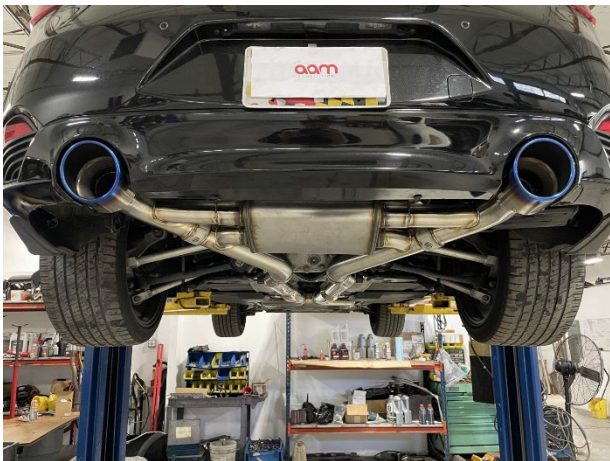


Setups 6-11 Installation of the Vacuum Generator Pump

6. Remove the lower trunk carpeted panel, by pulling it up and out with the factory pull tab located in the rear center of the trunk:



5. Once the muffler section has been installed. Inspect fitment and adjust any section as needed. Once you are satisfied with the fitment, tighten all clamps.



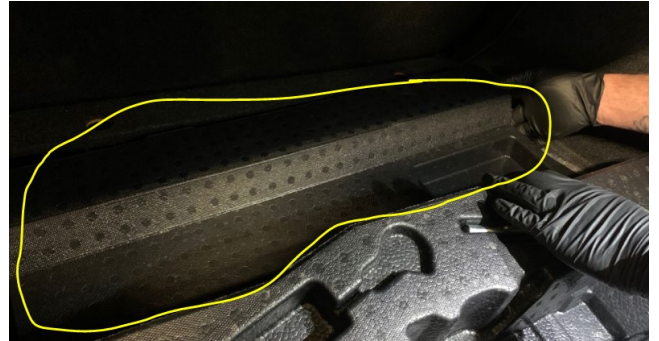
7. Remove the two factory pull pins located on the passenger side and driver side as shown:



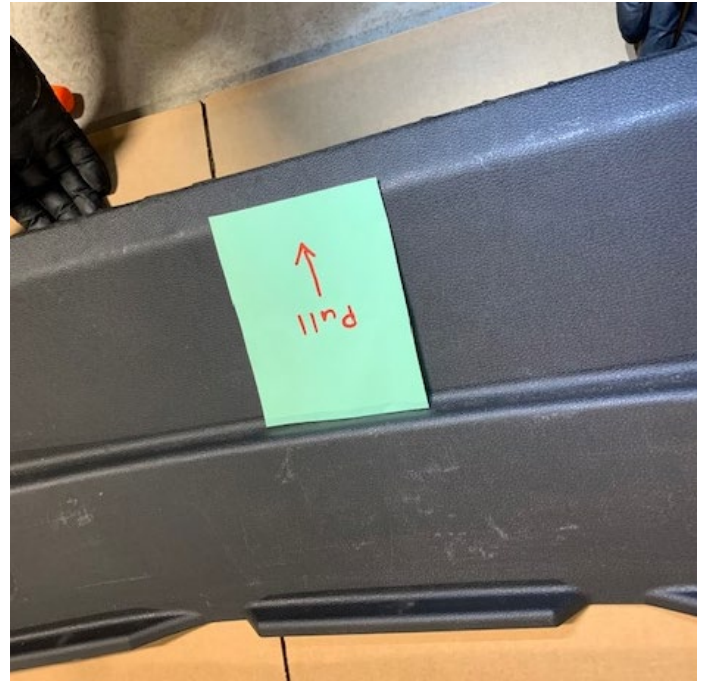
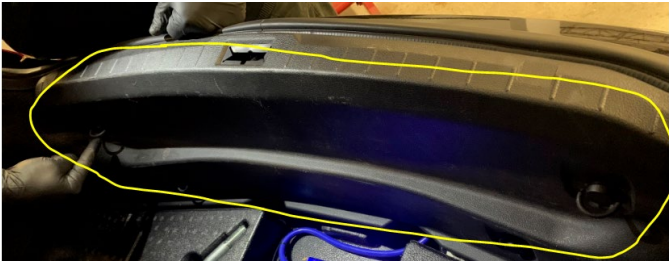
8. Remove the upper trunk cover (there are 12 pins to remove):



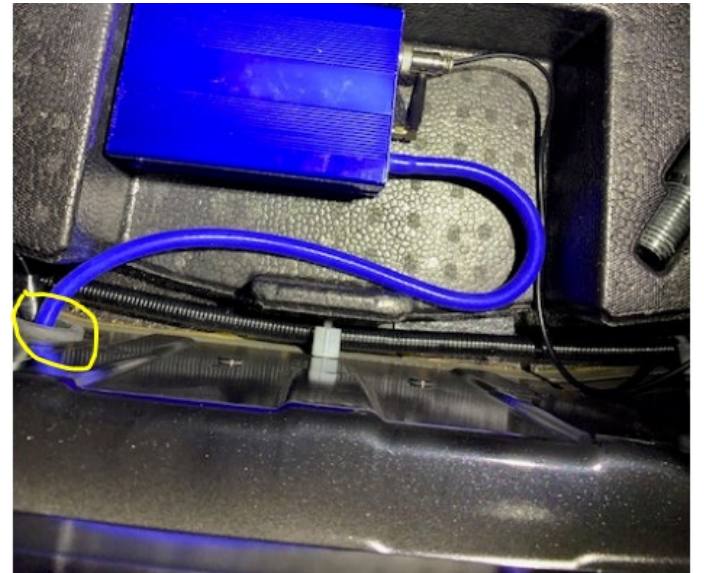
9. Remove the Styrofoam section at the forward section of the trunk:



10. Remove the rear most plastic panel from the trunk (the four clips snap out with a screwdriver). Pull in the direction of the arrow below to remove:



11. Pull out the rubber gromet that is located at the rear middle, slightly on the driver side, of the rear trunk:



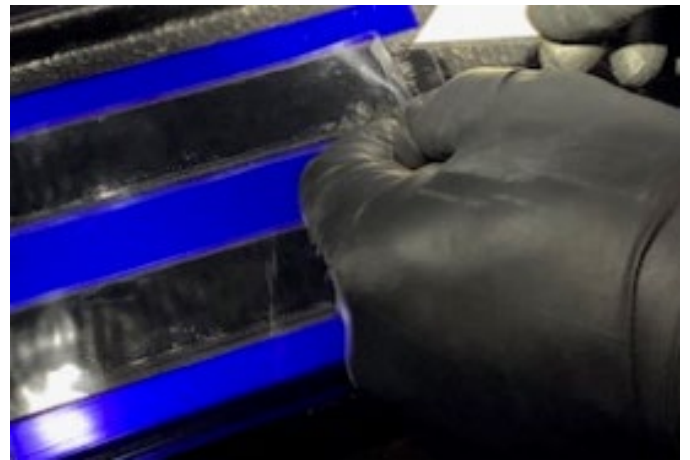
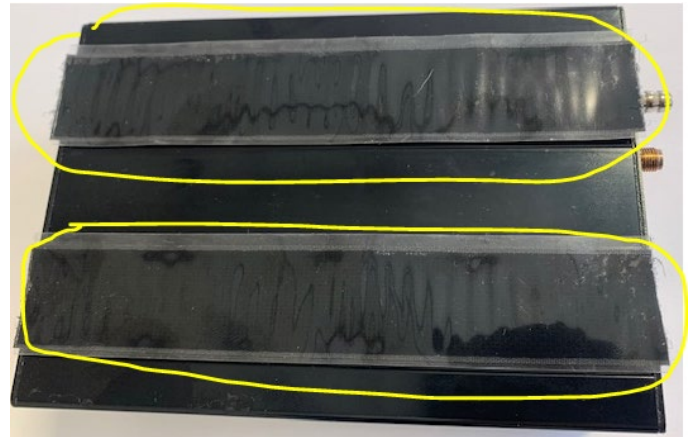
12. Cut a small slit in the rubber gromet (see yellow line):



13. Cut the included vacuum line into three sections of 2'. Use one section of vacuum line to run through the rubber grommet and into the trunk, and push the rubber grommet back into its spot so that it once again is firmly in place.



14. Remove the two strips of clear underside on the velcro strips that are attached to the underside of the vacuum generator):



15. With the clear strip removed (leave the actual Velcro strip attached to the underside of the vacuum generator), press the vacuum generator into its location as follows. Connect the vacuum line you ran through the rubber grommet to the vacuum generator as shown below.

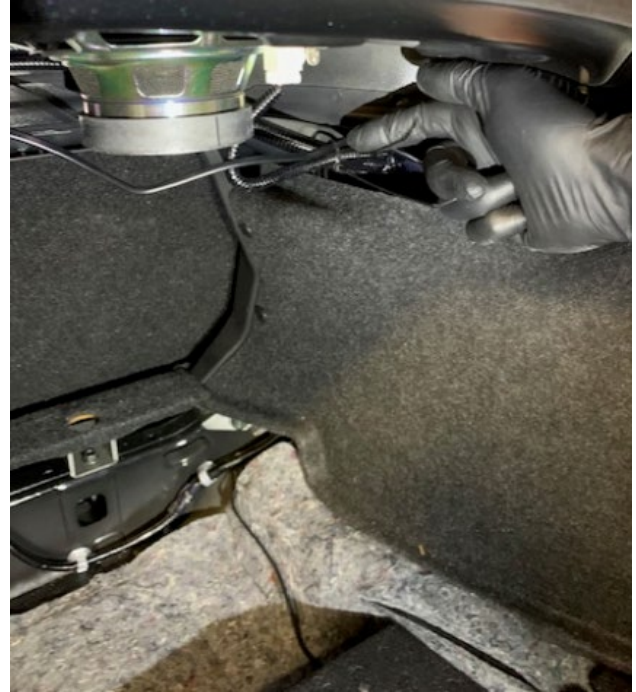


- 16.** Insert and tighten the round electrical connector to the vacuum pump:



- 17.** Run the electrical wire, below the Styrofoam, as shown below in yellow, to get it to the dome light located in the top of the trunk (note: we have left a lot of extra wire, for those who want to route the wiring a different way):



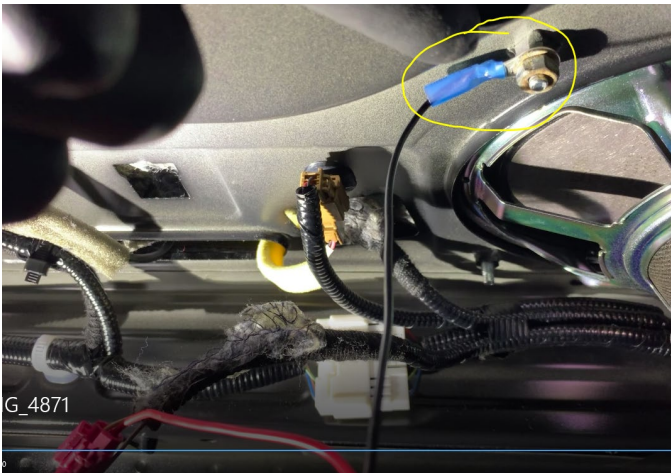


18. Now that the wire is at the upper middle section of the trunk, unclip the electrical plug that goes to the trunk dome light. Splice the power (red) wire to the dome light wire as shown using the included butt splice connector:





19. Attach the ground (black) wire to the factory stud that is located next to the passenger side speaker, using the supplied nut:



20. Tie wrap the electrical line as appropriate to be secure along its route.

21. Attach the antenna to the vacuum pump:



22. Locate the vacuum line you threaded from the trunk through the rubber grommet to the muffler section of the vehicle. Connect this vacuum line to the two other 2' sections of vacuum line you cut using the supplied vacuum tee as shown below.



23. Route the vacuum lines from the vacuum tee to the valve actuators on each side as shown below.





- 24.** Secure the vacuum line with tie wraps.
- 25.** Before the interior panels are re-installed, test the electrical connections. Take the exhaust key fob and click on the “On” button. The vacuum generator should run for 2 to 3 seconds, and the actuators on the exhaust will move (opens the internal valve). After fifteen seconds, hit the “Off” button on the key fob, and the valve should return to its closed position. This means everything is installed correctly and functioning properly. If the pump continues to run (does not turn off after the “On” button is pressed after 2 to 5 seconds, this means that there may be an air leak, which needs to be fixed).
- 26.** Now that the system is verified to be wired and installed correctly, re-install all the trunk paneling, Styrofoam, and liner(s).
- 27.** Install the exhaust tips, using the supplied clamps.
- 28.** Visually inspect installation of all components and ensure everything is reinstalled correctly and connected. Install the supplied hanger spacers if necessary to correct any fitment issues on the muffler section.
- 29.** Start vehicle and verify that there are no exhaust leaks; **If an exhaust leak is found, coat the ball ends of the AAM Competition exhaust with RTV silicone gasket maker**

Congratulations!

**You have successfully installed the AAM Competition Q50/Q60
3.0t 3” True Dual Premium Adjustable Exhaust System V2 -
Enjoy!**